

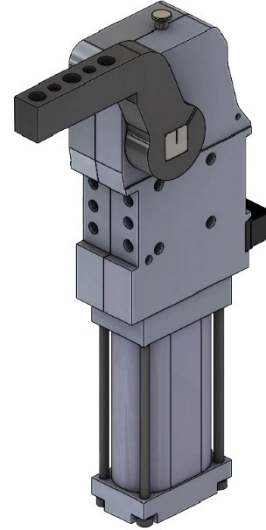


# NAAMS 夹紧气缸 CPN50/63

## Pneumatic clamp NAAMS CPN50/63

### 主要特点:

- 铝制壳体
- 曲柄连杆原理
- 打开角度可调
- 顶部检测销检测最终位置
- NAAMS 规格
- 4 个安装面 (前面, 后面 e 侧面)
- 2 个气缸缸径: 50 e 63 mm
- 2 个气源接口 G1/4" o 1/4" NPT
- 电感式接近开关 (接口 M12x1)
- 带手动机构可选



### Main characteristics:

- Aluminum flanks
- Toggle action mechanism
- Opening angle easily adjustable
- Checking pin for verifying the end position
- NAAMS Norm
- 4 mounting areas (front, back, on the sides)
- 2 different pneumatic cylinder bores: 50 and 63 mm
- 2 feeding ports G1/4" or 1/4" NPT
- Inductive proximity switch (connection M12x1)
- Hand lever



[PDF](#)



[3D Step](#)



[Index](#)

### 索引.

### Index.

页码 Page	描述 Description	
1	主要特点 / Main characteristics	
2	订货举例 / Ordering example	
3	尺寸页码 Dimensional page	CPN50-XXX
4		CPN63-XXX
5		CPNM50/63 XXX
6	图表 / Diagrams	
7	图表 Diagrams	电感式接近开关 Inductive proximity switch
		气路图 Pneumatic plan
8	操作说明 Operating instructions	打开角度 Opening angle change
9	备件 / Spare parts	
10 - 12	Naams 夹臂 / Arm Naams	
13	备注 / Notes	



## 订货举例.

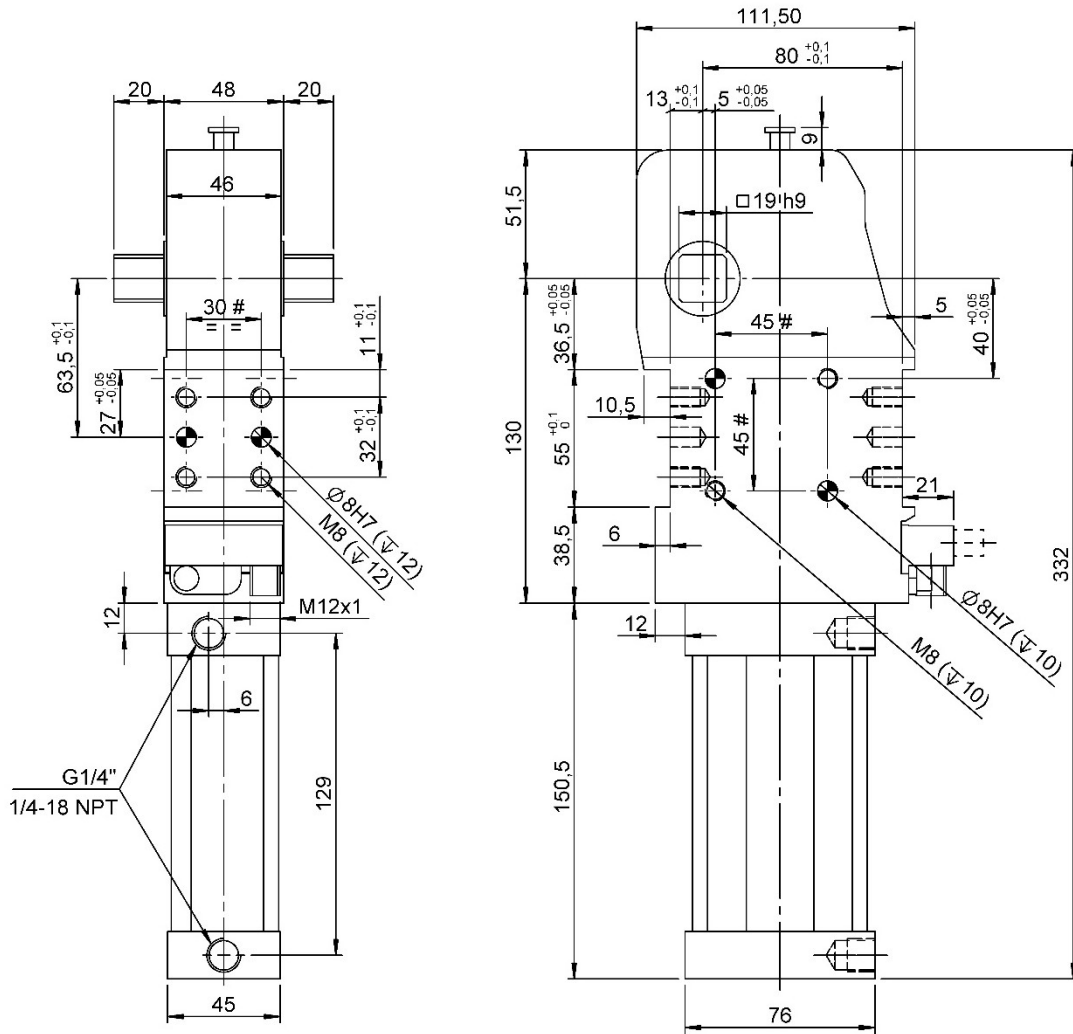
## Ordering example.

CPN50	LA - XXX	I 1	G	-	107						
<p><b>产品类型和气缸缸径:</b> <b>Model and cylinder bore</b></p> <p><b>CPN50</b> 标准 CPN 夹紧气缸 缸径 Ø50mm standard clamp CPN cylinder bore Ø50mm</p> <p><b>CPNM50</b> 标准 CPN 夹紧气缸 带手动机构 缸径 Ø50mm standard clamp CPN with hand lever cylinder bore Ø50mm</p> <p><b>CPN63</b> 标准 CPN 夹紧气缸 缸径 Ø63mm standard clamp CPN cylinder bore Ø63mm</p> <p><b>CPNM63</b> 标准 CPN 夹紧气缸 带手动机构 缸径 Ø63mm standard clamp CPN with hand lever cylinder bore 63mm</p> 		<p><b>接近开关:</b> <b>Proximity switch:</b></p> <p><b>X:</b> 无接近开关 without proximity switch</p> <p><b>I1:</b> 电感式接近开关 VEP 标准 (0°) inductive proximity switch VEP standard (0°)</p>  <p><b>I2:</b> 电感式接近开关 VEP (90°) inductive proximity switch VEP (90°)</p> 			<p><b>可调打开角度:</b> <b>Adjustable opening angle:</b></p> <table border="1" style="margin: 10px auto; border-collapse: collapse;"> <thead> <tr> <th style="padding: 5px;">从</th> <th style="padding: 5px;">至</th> <th style="padding: 5px;">标准</th> </tr> </thead> <tbody> <tr> <td style="text-align: center; padding: 5px;">2,5°</td> <td style="text-align: center; padding: 5px;">135°</td> <td style="text-align: center; padding: 5px;">122°</td> </tr> </tbody> </table> <p>若未标明，将提供标准打开角度的夹紧气缸。 If not indicated, the clamp will be provided with the standard opening angle.</p>	从	至	标准	2,5°	135°	122°
从	至	标准									
2,5°	135°	122°									
		<p><b>气源接口类型:</b> <b>Feeding ports type:</b></p> <p><b>G:</b> 接口 G 1/4" ports type G 1/4"</p> <p><b>N:</b> 接口 1/4" NPT ports type 1/4" NPT</p> 									
<p><b>手柄位置</b> <b>Hand lever position:</b></p> <p><b>LX:</b> 配置手柄 lever arrangement</p> <p><b>LA:</b> 左手柄 left lever</p> <p><b>LB:</b> 右手柄 right lever</p> 		<p><b>夹臂类型:</b> <b>Type of arm:</b></p> <p><b>XXX:</b> 无夹臂 without arm</p> <p>夹臂另外提供 (请参见第 10-12 页) Arms supplied separately (See pages 10-12)</p> 									



## CPN50 XXX...

夹紧气缸, D.50, 打开角度可调.  
Clamp, D.50, Vario Op. Angle.



气缸外部必须安装节流阀。  
VEP 供应气缸不包含节流阀。

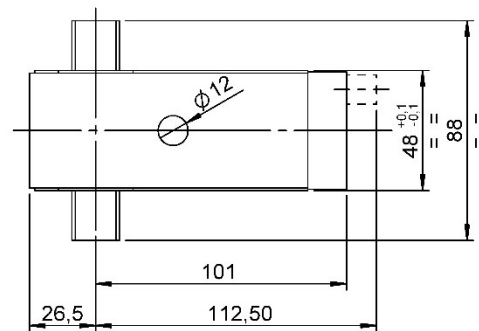
External throttle check valves must be provided on the assembly. They are not included in the delivery.

标准打开角度:

在 2° -135°可调范围内可以设置 35 个角度位置。

Standard opening angles:

settable in 35 different positions in a range between 2,5° and 135°.



# 公差: 定位销孔 ±0.02, 螺纹孔 ±0.1

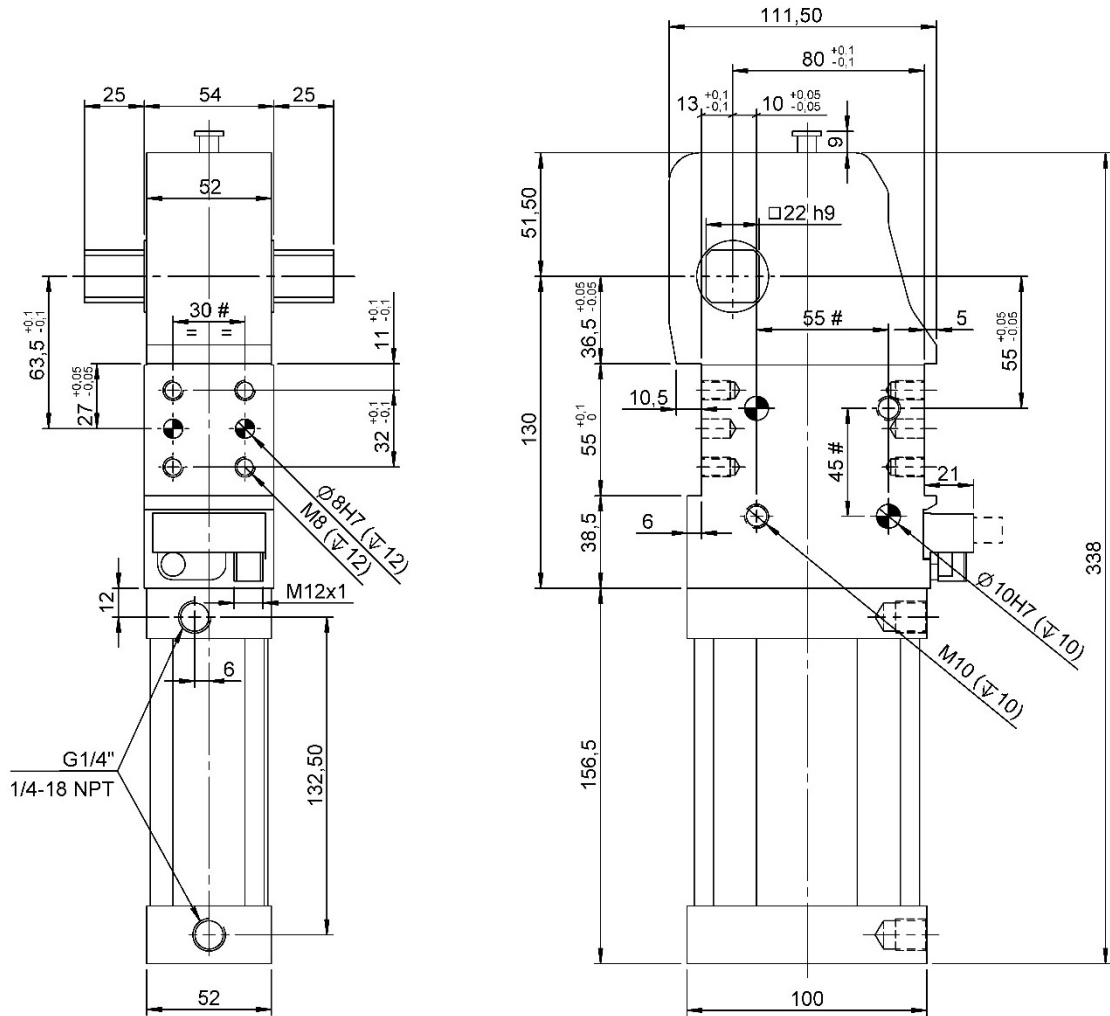
# Tolerances: dowel holes ±0.02, screw holes ±0.1

类型 Type	缸径 Cylinder bore	保持力 Holding moment	重量 Weight	工作气压 Working pressure	最大夹紧扭矩 (5 bar) Clamping max. torque (5 bar)	耗气量 (5 bar) Air consumption (5 bar)
	[ mm ]	[ Nm ]	[ Kg ]	[ bar ]	[ Nm ]	[ l ]
CPN50 XXX...	50	1300	~ 4	4 - 8	250	3



## CPN63 XXX...

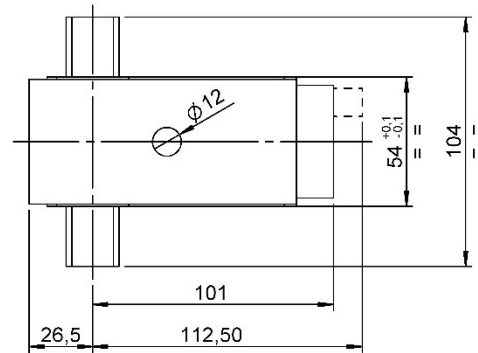
夹紧气缸, D.63, 打开角度可调.  
Clamp, D.63, Vario Op. Angle.



气缸外部必须安装节流阀。  
VEP 供应气缸不包含节流阀。  
External throttle check valves must be provided on the assembly. They are not included in the delivery.

标准打开角度：  
在 2° -135°可调范围内可以设置 35 个角度位置。

Standard opening angles:  
settable in 35 different positions in a range between 2,5° and 135°.



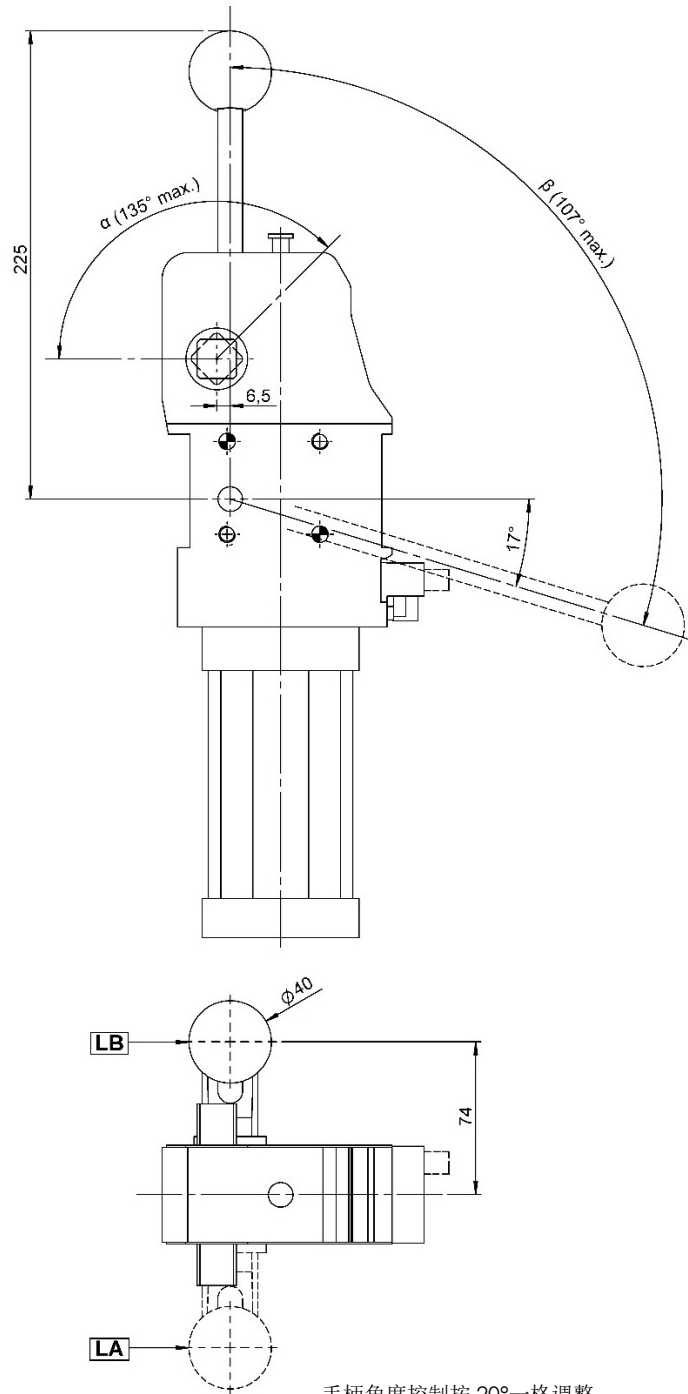
#公差: 定位销孔 ±0.02, 螺纹孔 ±0.1  
#Tolerances: dowel holes ±0.02, screw holes ±0.1

类型 Type	缸径 Cylinder bore	保持力 Holding moment	重量 Weight	工作气压 Working pressure	最大夹紧扭矩 (5 bar) Clamping max. torque (5 bar)	耗气量 (5 bar) Air consumption (5 bar)
	[ mm ]	[ Nm ]	[ Kg ]	[ bar ]	[ Nm ]	[ l ]
CPN63 XXX...	63	1700	~ 5	4 - 8	420	3,8



CPNM50L...XXX... / CPNM63L...XXX...

夹紧气缸, D.50/63, 打开角度可调, 带手动机构.  
Clamp, D.50/63, Vario Op. Angle, Hand Lever.



手柄角度控制按 20°一格调整  
Manual control adjustable in steps of 20°

$\alpha$	16°	30°	46°	58°	75°	91°	107°	122°	135°
$\beta$	37°	47°	57°	63°	73°	82°	92°	101°	107°

#公差: 定位销孔  $\pm 0.02$ , 螺纹孔  $\pm 0.1$   
#Tolerances: dowel holes  $\pm 0.02$ , screw holes  $\pm 0.1$

类型 Type	缸径 Cylinder bore	保持力 Holding moment	重量 Weight	工作气压 Working pressure	最大手动推力 Max. manual force
	[ mm ]	[ Nm ]	[ Kg ]	[ bar ]	[ N ]
CPNM50L...XXX...	50	1300	~ 4,5	4 - 8	200
CPNM63L...XXX...	63	1700	~ 5,5		

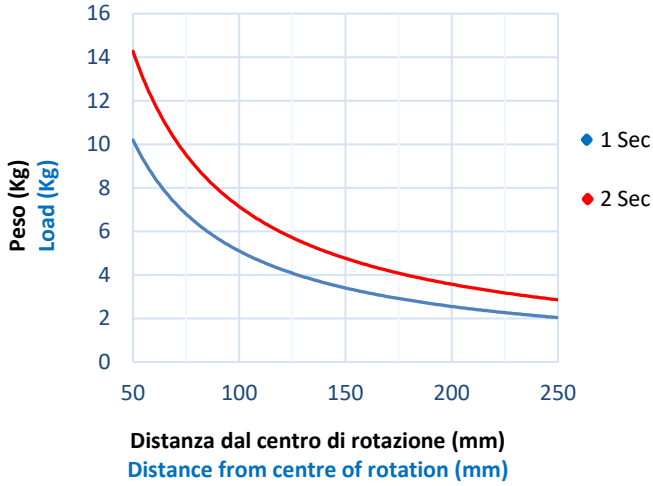


## CPN50 曲线图.

### Diagrams CPN50.

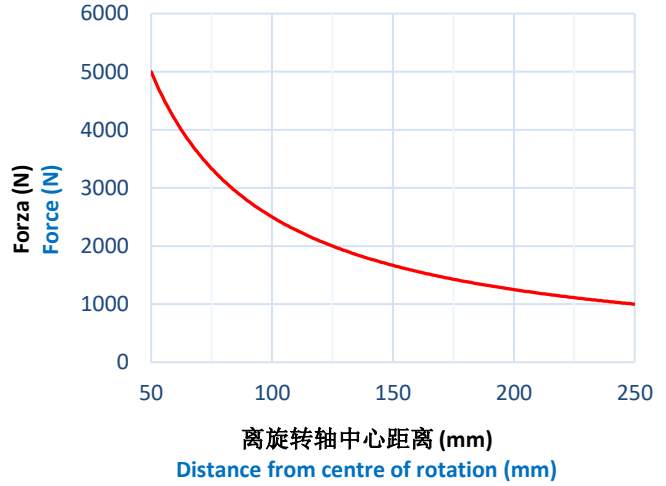
5 bar 气压夹臂最大承受负载(Kg) .

Max. load applicable on the arm (Kg) at 5 bar.



5 bar 气压最大承受力 (N).

Max. force applied (N) at 5 bar.



类型 Type	最大重量力矩 Max. torque By weight [Nm]		最大偏心力矩 The max torque for applications with the load out of axis [Nm]	
	1 sec	2 sec	1 sec	2 sec
CPN 50	5	7.0	4	5.6

最大夹紧扭矩 (5 bar): **250 Nm.**

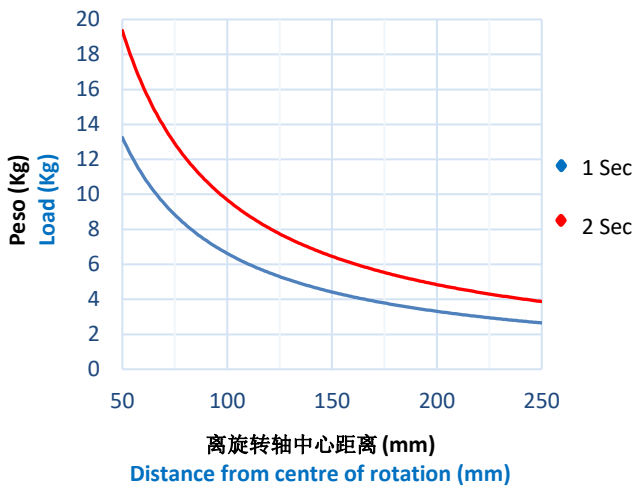
Max. clamping torque (5 bar): **250 Nm.**

## CPN63 曲线图.

### Diagrams CPN63.

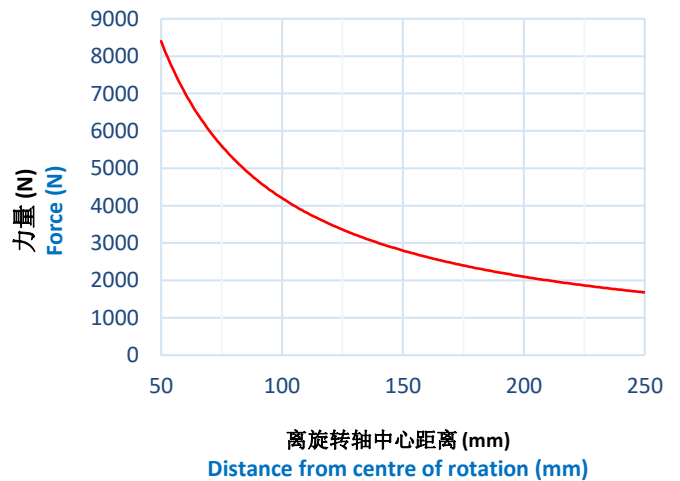
5 bar 气压夹臂最大承受负载(Kg).

Max. load applicable on the arm (Kg) at 5 bar.



5 bar 气压最大承受力 (N).

Max. force applied (N) at 5 bar.



类型 Type	最大重量力矩 Max. torque By weight [Nm]		最大偏心力矩 The max torque for applications with the load out of axis [Nm]	
	1 sec	2 sec	1 sec	2 sec
CPN 63	6.5	9.5	5.2	7.6

最大夹紧扭矩 (5 bar): **420 Nm.**

Max. clamping torque (5 bar): **420 Nm.**



## 电感式接近开关示意图 (cod. 09127/.../C).

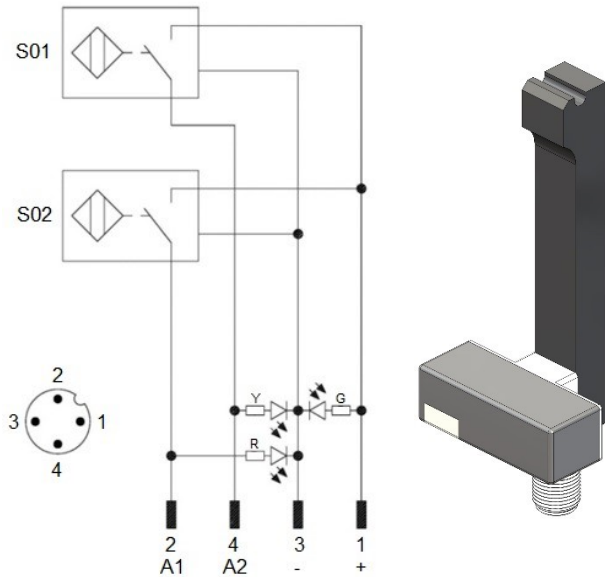
### Diagram for Inductive proximity switch (cod. 09127/.../C).

#### 技术参数(P+F):

- 输出类型: PNP;
- 输入电压: 10-30 VDC;
- 最大换向电流: 150 mA;
- 耗电电流: < 20 mA;
- 电压差: < 1,8 V
- 工作温度: -25° / 70° C.

#### Technical data (P+F):

- Output type: PNP;
- Feeding voltage: 10-30 VDC;
- Max. commutating current: 150 mA;
- Power supply: < 20 mA;
- Voltage drop: < 1,8 V;
- Temperature range: -25° / 70° C.



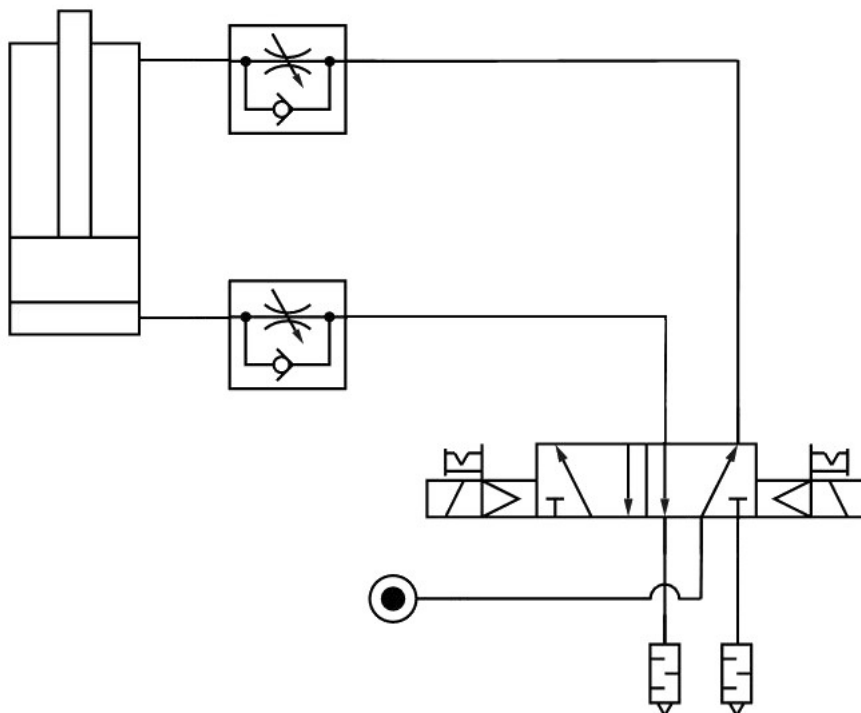
S01 = s 打开信号  
S01 = opening signal  
S02 = 夹紧信号  
S02 = closing signal

Y = 黄色 LED / yellow LED  
G = 绿色 LED / green LED  
R = 红色 LED / red LED

1 = 棕色线 / brown wire  
2 = 黑色线 / black wire  
3 = 蓝色线 / blue wire  
4 = 白色线 / white wire

## 气路图.

### Pneumatic plan.





## 操作说明.

### Operating instructions.

#### 调整打开角度.

- 让夹臂处于打开状态; (图 1)
- 拆下传感器下面的 M6 插口螺丝; (Imm. 2)
- 插入最大  $\varnothing$  5mm 的六角扳手, 推压弹簧, 施力  $\geq 80$  N; (图 3)
- 保持压住弹簧状态, 手动移动夹臂位置到需要的角度;
- 松开弹簧让组件自动耦合.

#### Opening angle change.

- Bring the clamp arm in the opening position; (Image 1)
- Unscrew the M6 socket screw below the inductive sensor; (Image 2)
- Put a key with  $\varnothing$  max. 5 mm into the hole, and push the spring applying a force  $\geq 80$  N; (Image 3)
- Keep pushing on the spring and move the clamp arm manually to the desired position;
- Release the spring to allow the automatic coupling of the components.

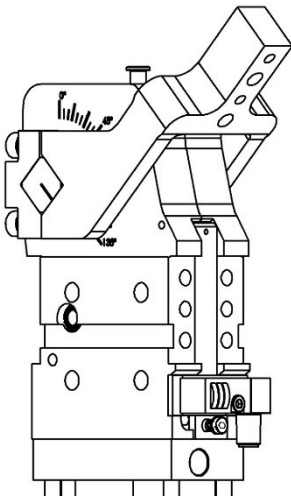


图 1  
Image 1

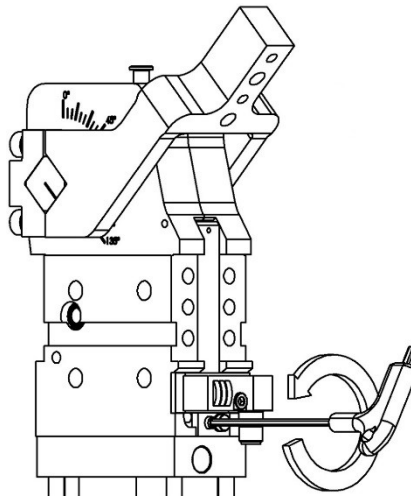


图 2  
Image 2

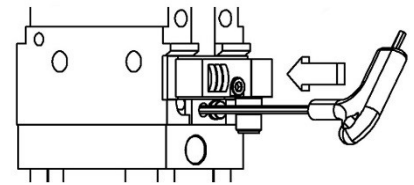


Immagine 3  
Image 3

#### 打开角度

#### Opening angles.








Tipo Type	Angoli d'apertura / Opening angles																	
	2,5	4	6	8	10	13	16	19	22	26	30	34	38	42	46	50	54	58
CPN...	•	•	•	•	•	•	•	•	•	•	•	•	•	•	•	•	•	•

Tipo Type	Angoli d'apertura / Opening angles																
	62	67	71	75	79	83	87	91	95	99	103	107	112	117	122	128	135
CPN...	•	•	•	•	•	•	•	•	•	•	•	•	•	•	•	•	•



备件.

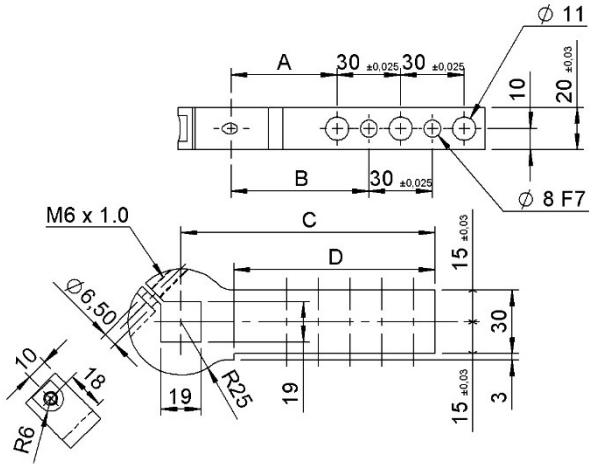
## Spare parts.

配套元件 # Kit	图片 Picture	描述 Description	类型 Model	代号 Article
接近开关 Proximity switch		VEP完整配套接近开关(0°) Inductive proximity switch VEP (0°)	CPN50	09127/1/C
		VEP完整配套接近开关(90°) Inductive proximity switch VEP (90°)	CPN63	09127/2/C
密封圈套装 Seals kit		气缸完整密封组件 Seal components for pneumatic cylinder	CPN50	SCR-CPN50
密封圈套装 Seals kit		气缸完整密封组件 Seal components for pneumatic cylinder	CPN63	SCR-CPN63
气缸 Pneumatic cylinder		50 mm 缸径完整气缸 Complete pneumatic cylinder bore 50 mm	GAS	08984/C
			NPT	08984/N/C
气缸 Pneumatic cylinder		63 mm缸径完整气缸 Complete pneumatic cylinder bore 63 mm	GAS	08985/C
			NPT	08985/N/C
手柄 Manual control lever		手柄仅用于 CPNM夹紧气缸... Lever manual control pneumatic clamp CPM...	CPN50	09107/50/C
			CPN63	09107/63/C



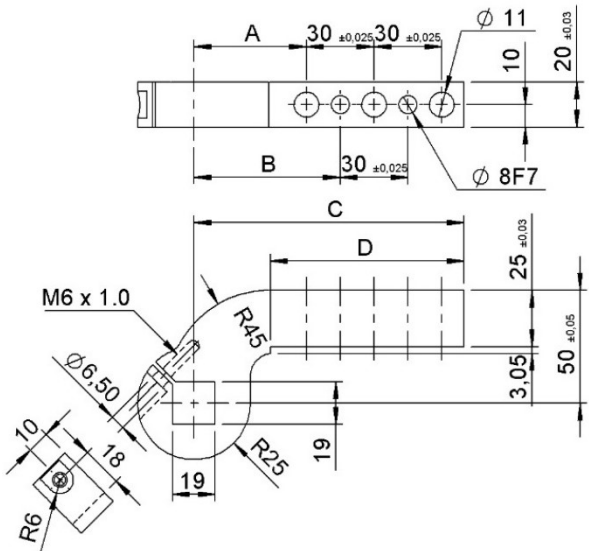
## NAAMS 夹臂 / ARMS NAAMS

### CPN 50 – Straight



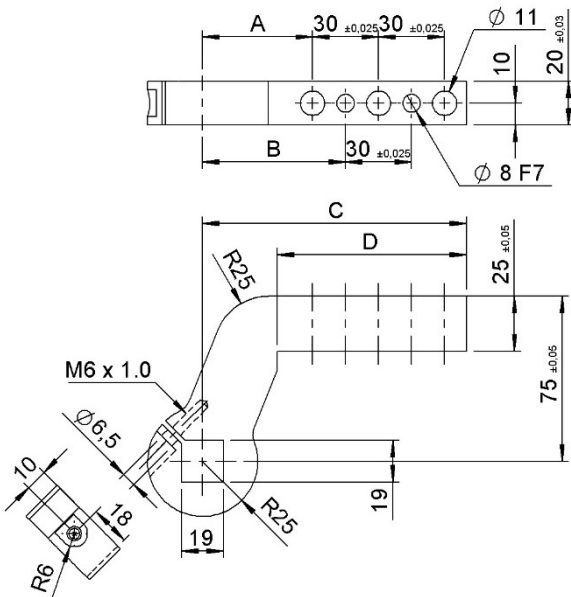
件号 Part no.	NAAMS 代号 code	A	B	C	D	重量 Weight [Kg]	N. 定位销孔 Ø8 N. dowel holes Ø8	N. 螺纹孔 Ø11 N. screw holes Ø11
VNA50A-206B	ACA206M	50	65	90	65	0.5	1	2
VNA50A-207B	ACA207M	50	65	120	95	0.6	2	3
VNA50A-208B	ACA208M	50	65	150	125	0.7	3	4

### CPN 50 – Offset 25 mm



件号 Part no.	NAAMS 代号 code	A	B	C	D	重量 Weight [Kg]	N. 定位销孔 Ø8 N. dowel holes Ø8	N. 螺纹孔 Ø11 N. screw holes Ø11
VNA50A-216B	ACA216M	50	65	90	56	0.5	1	2
VNA50A-217B	ACA217M	50	65	120	86	0.6	2	3
VNA50A-218B	ACA218M	50	65	150	116	0.7	3	4

### CPN 50 – Offset 50 mm

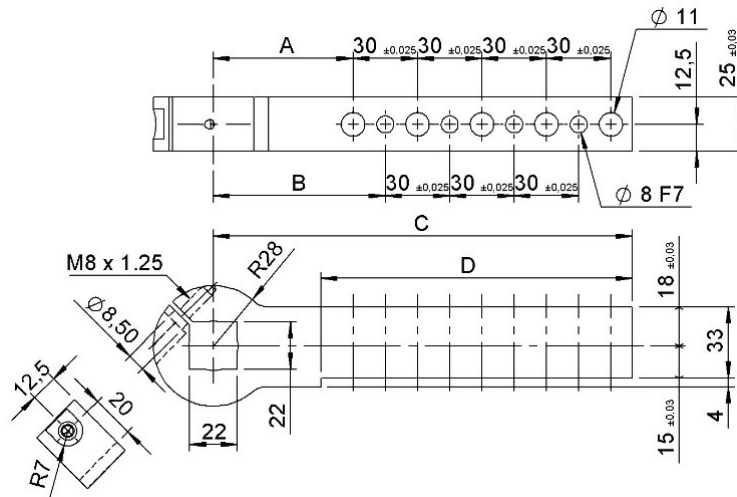


件号 Part no.	NAAMS 代号 code	A	B	C	D	重量 Weight [Kg]	N. 定位销孔 Ø8 N. dowel holes Ø8	N. 螺纹孔 Ø11 N. screw holes Ø11
VNA50A-226B	ACA226M	50	65	90	56	0.6	1	2
VNA50A-227B	ACA227M	50	65	120	86	0.7	2	3
VNA50A-228B	ACA228M	50	65	150	116	0.8	3	4

可应客户要求提供其他类型/ Other types available on request

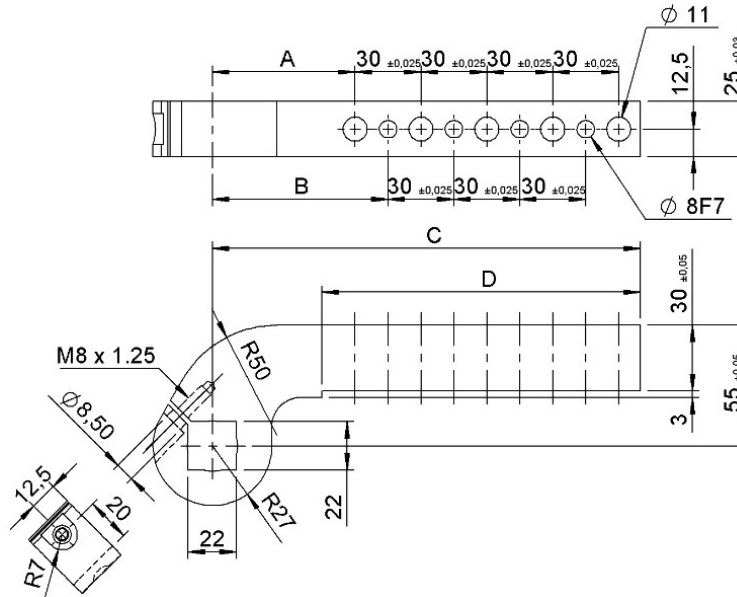


## CPN 63 – Straight



件号 Part no.	NAAMS 代号 / code	A	B	C	D	重量 / Weight [Kg]	定位销孔 Ø8 N. dowel holes Ø8	螺纹孔 Ø11 N. screw holes Ø11
VNA63A-007B	ACA007M	65	80	135	85	1.0	2	3
VNA63A-008B	ACA008M	65	80	165	115	1.2	3	4
VNA63A-009B	ACA009M	65	80	195	145	1.4	4	5
VNA63A-010B	ACA010M	65	80	225	175	1.5	5	6
VNA63A-011B	ACA011M	65	80	255	205	1.7	6	7
VNA63A-012B	ACA012M	65	80	285	235	1.9	7	8

## CPN 63 – Offset 25 mm

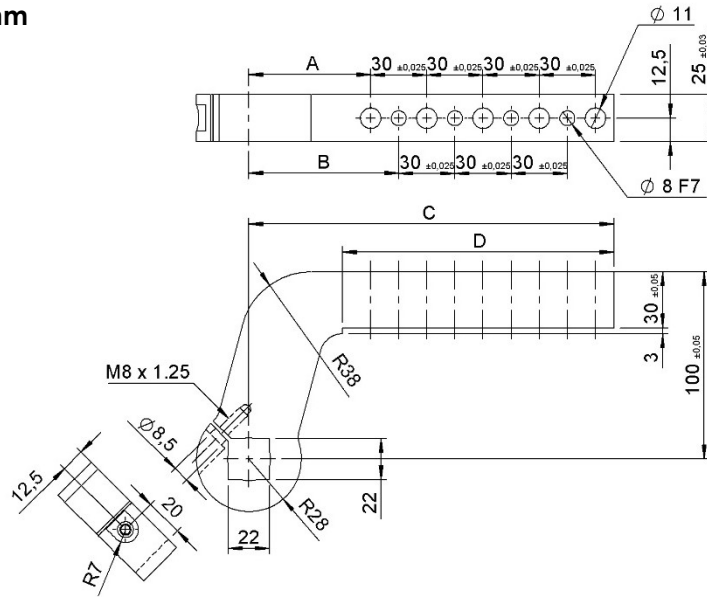


件号 Part no.	NAAMS 代号 / code	A	B	C	D	重量 / Weight [Kg]	定位销孔 Ø8 N. dowel holes Ø8	螺纹孔 Ø11 N. screw holes Ø11
VNA63A-019B	ACA019M	65	80	135	85	1.3	2	3
VNA63A-020B	ACA020M	65	80	165	115	1.5	3	4
VNA63A-021B	ACA021M	65	80	195	145	1.6	4	5
VNA63A-022B	ACA022M	65	80	225	175	1.7	5	6
VNA63A-023B	ACA023M	65	80	255	205	1.9	6	7
VNA63A-024B	ACA024M	65	80	285	235	2.1	7	8

可应客户要求提供其他类型 / Other types available on request

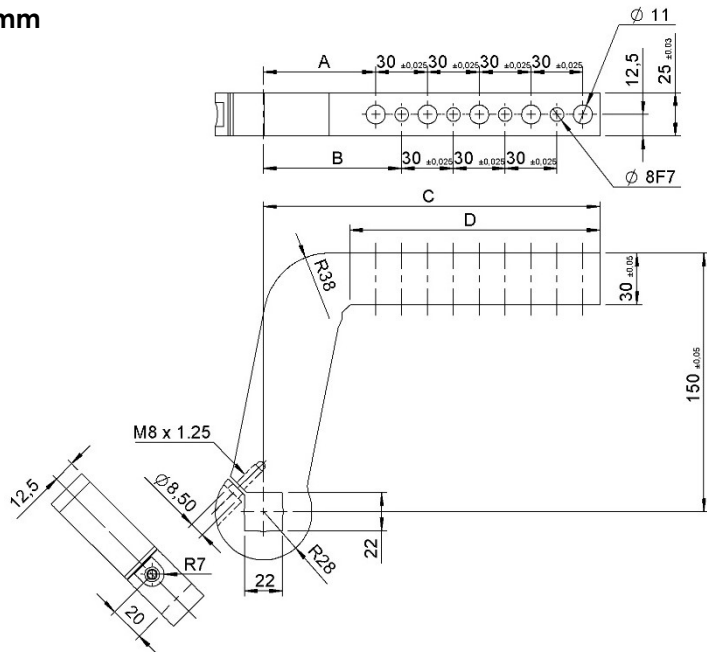


## CPN 63 – Offset 70 mm



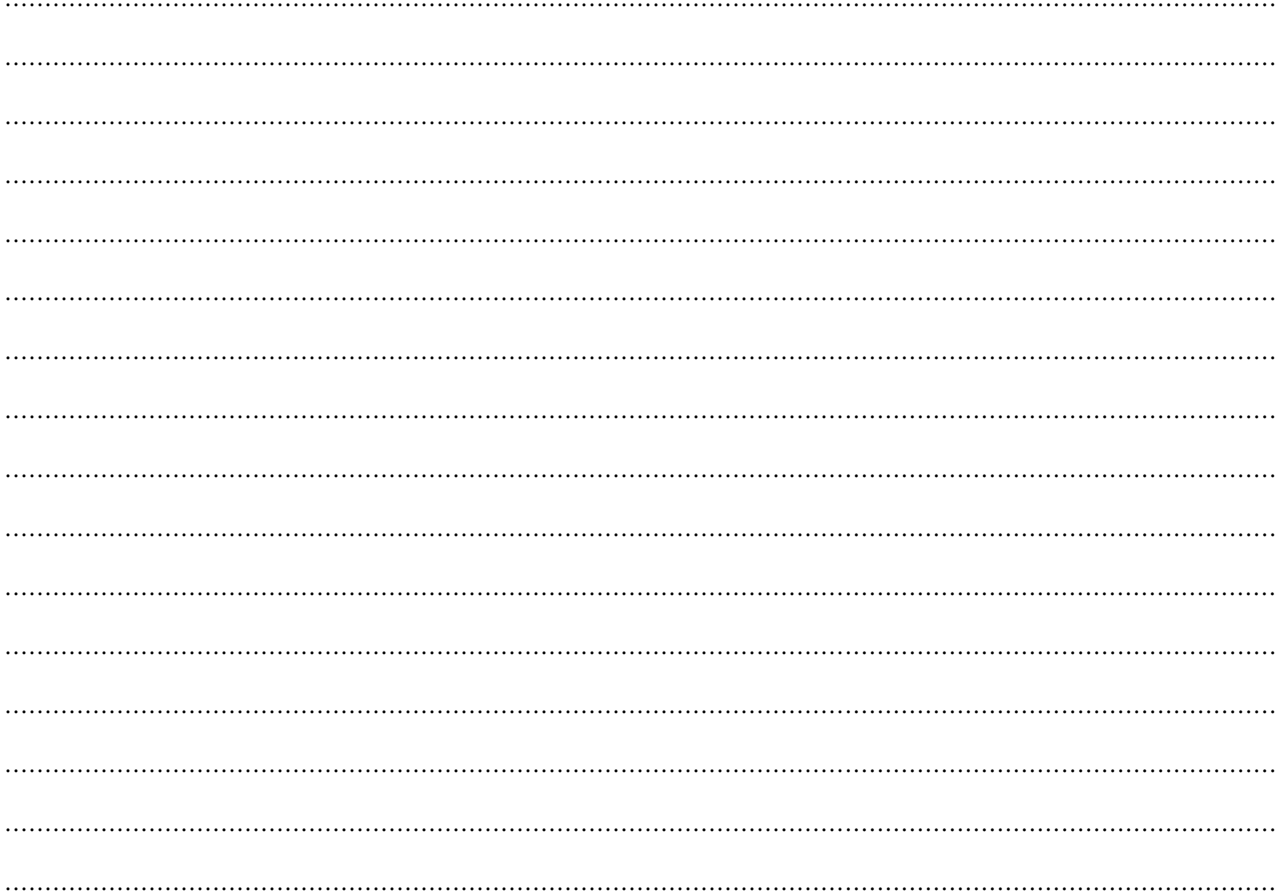
件号 Part no.	NAAMS 代号 / code	A	B	C	D	重量 / Weight [Kg]	定位销孔 Ø8 N. dowel holes Ø8	螺纹孔 Ø11 N. screw holes Ø11
VNA63A-031B	ACA031M	65	80	135	85	1.4	2	3
VNA63A-032B	ACA032M	65	80	165	115	1.6	3	4
VNA63A-033B	ACA033M	65	80	195	145	1.8	4	5
VNA63A-034B	ACA034M	65	80	225	175	1.9	5	6
VNA63A-035B	ACA035M	65	80	255	205	2.1	6	7
VNA63A-036B	ACA036M	65	80	285	235	2.3	7	8

## CPN 63 - Offset 120 mm



件号 Part no.	NAAMS 规号 / code	A	B	C	D	重量 / Weight [Kg]	定位销孔 Ø8 N. dowel holes Ø8	螺纹孔 Ø11 N. screw holes Ø11
VNA63A-043B	ACA043M	65	80	135	85	1.8	2	3
VNA63A-044B	ACA044M	65	80	165	115	2.0	3	4
VNA63A-045B	ACA045M	65	80	195	145	2.1	4	5
VNA63A-046B	ACA046M	65	80	225	175	2.3	5	6
VNA63A-047B	ACA047M	65	80	255	205	2.5	6	7
VNA63A-048B	ACA048M	65	80	285	235	2.6	7	8

可应客户要求提供其他类型/ Other types available on request



本目录取消并替换了以前的目录。我们保留在没有任何通知的情况下进行添加或更改的权利。目录中的产品为标准产品；对特殊应用的任何请求都由技术/商务部门进行评估。本目录文档均属 VEP Automation S.r.l. 所有。未经授权许可，禁止任何形式的复制。

This catalogue cancels and replaces the previous ones. We reserve the right to make additions or changes without any notice. The products in the catalogue are standard; any enquiry of special applications is evaluated by technical/sales department. The complete documentation belongs to VEP Automation S.r.l. and without permission any kind of reproduction is forbidden.

## VEP Automation Headquarters

### VEP Automation S.r.l

Via San Felice, 37  
10092 Beinasco – Torino (Italy)  
Tel. +39 011 3972572  
Email: [info@vepautomation.it](mailto:info@vepautomation.it)  
Web: [www.vepautomation.it](http://www.vepautomation.it)

## VEP Automation Germany

### VEP Automation GmbH

Fritz Liebsch Str. 29  
D 26723 Emden (Germany)  
Tel. +49 04921 450758  
Email: [info@vepautomation.de](mailto:info@vepautomation.de)  
Web: [www.vepautomation.de](http://www.vepautomation.de)

## VEP Automation America

### VEP Automation S.A.

Av. Toluca 373 M Col. Olivar de los  
Padres Del. Álvaro Obregón  
01780 CDMX – (Ciudad de México)  
Tel. +52 55 1718 0929  
Email: [info@vepautomation.mx](mailto:info@vepautomation.mx)  
Web: [www.vepautomation.mx](http://www.vepautomation.mx)

## VEP Automation China

### 维亿普自动化（苏州）有限公司

地址：中国江苏省苏州市吴中区木渎镇  
木东路 317 号（联东 U 谷）1 幢 401 室  
Room 401, Building No 1, No 317, mudong Road,  
Wuzhong, mudu District, Suzhou City (China)  
电话: +86 512 6729 2226  
邮箱: [info@vepautomation.cn](mailto:info@vepautomation.cn)  
网址: [www.vepautomation.cn](http://www.vepautomation.cn)